



4



2



2



1

SEATTLE 2015

\$376,367

LAND SIZE: 451m²

HOUSE SIZE: 187.45m²

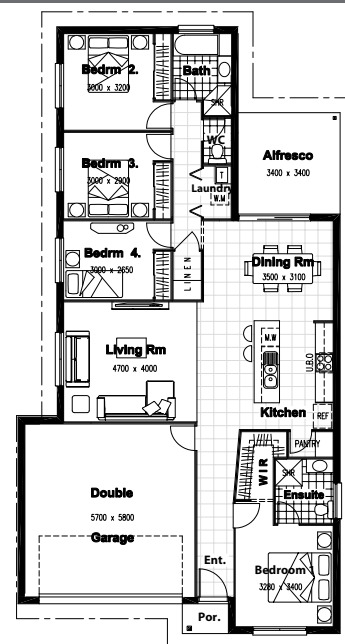
GROWTH CORRIDOR - CABOOLTURE Lot 77



The Reserve is a residential land estate located in the high growth area of Caboolture, in Brisbane's northern suburbs. The estate borders the King Johns Creek on two sides and also enjoys a natural bushland setting to the east.

The Reserve will have home sites to suit individual needs, with large parks and reserve areas, as well as quality landscaped streets. Protective guidelines and covenants will protect residents investments.

The estate is also surrounded by a multitude of amenities and facilities including schools, golf courses, shopping centres, train station and easy access to the Bruce Highway.



INVESTMENT HOMES MADE EASY

PO Box 116 Kedron QLD 4031 | sales@investorbuild.com.au | 0450 670 231 | 07 3857 6276 | www.investorbuild.com.au

Disclaimer: Artist impression is an indicative only. Based on Investorbuild standard range of turnkey inclusions. Price can change without notice.